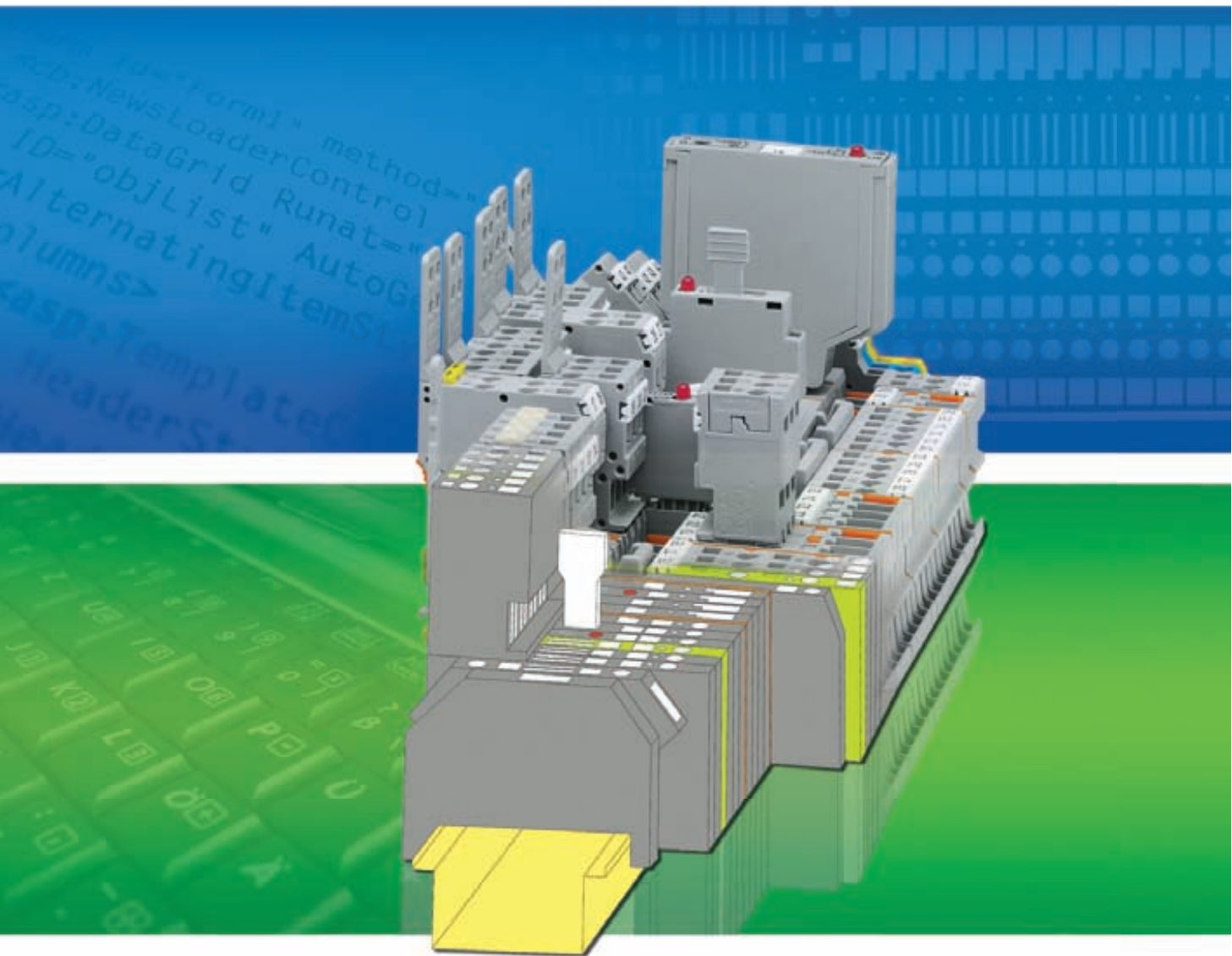


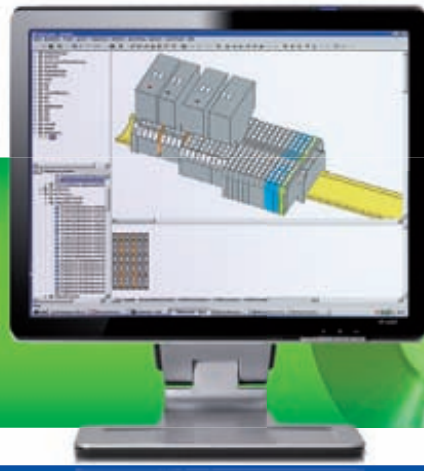
English



• ProServe Software

• Quick-Start

WAGO[®]
INNOVATIVE CONNECTIONS



Contents

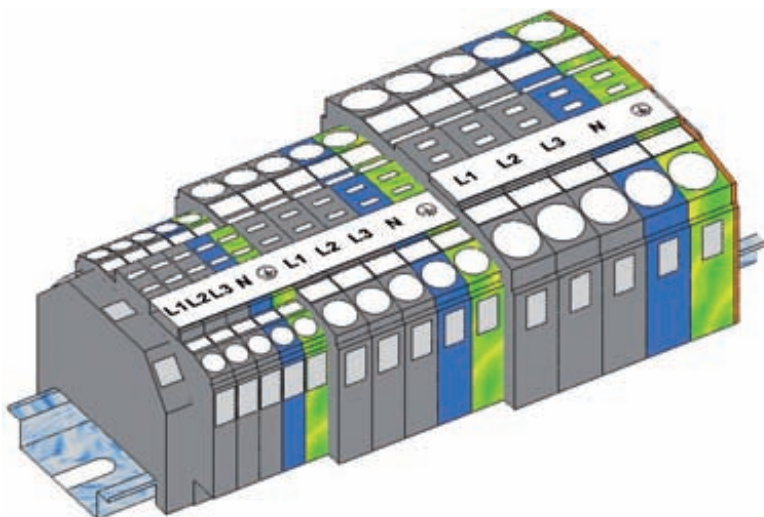
What is ProServe?	4
How to create a new project?	6
How to set components on the carrier rail?	8
How to set accessories on the components?	10
How to mark the designed components?	12
CAE Import	14
CAD Export	16

ProServe

WAGO offers a wide range of products – from rail-mounted terminal blocks via PCB connectors right up to automation components of the WAGO-I/O-SYSTEM. This exhaustive range of products can be mapped in the WAGO ProServe software, which is used to design, perform plausibility check, printout a complete documentation or export data to your CAD system.

Benefits in overview:

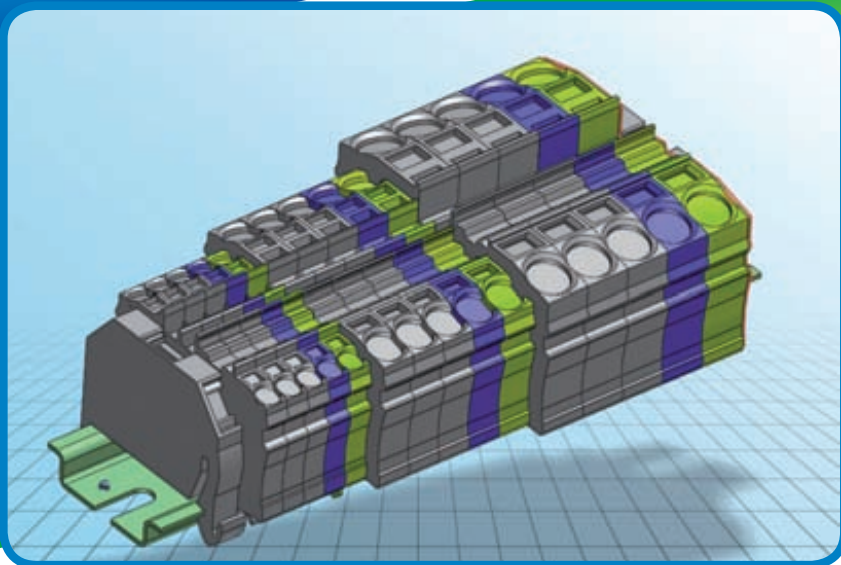
- Quick design
- Quick ordering
- User-friendly
- Extensive and user-specific documentation
- Network compatibility
- Several software products on a single CD (smartDESIGNER, productLOCATOR, smartMARKING, WAGO SCRIPT)
- A price list is included





smartDESIGNER and productLOCATOR

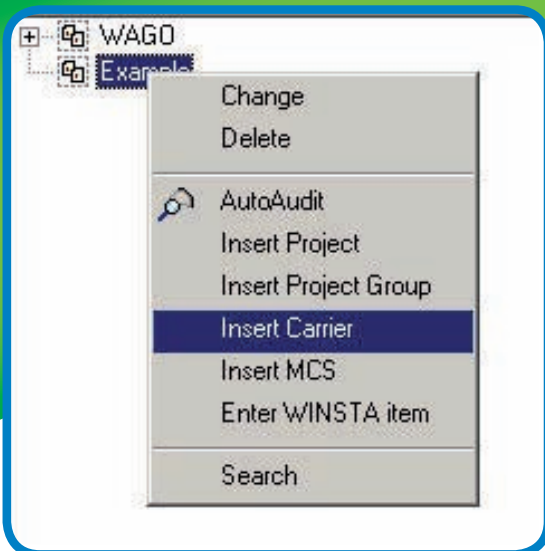
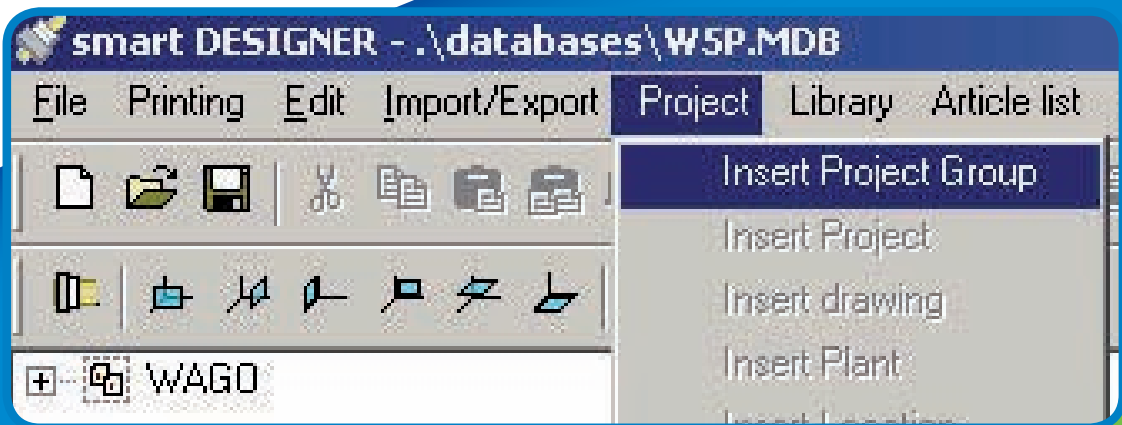
- The suitable interface for most of the standard CAD/CAE systems.
- Output in PDF and HTML
- Different search functions allow for quick selection of products
- Creation of part lists including product pictures and custom part numbers
- Complex rail assemblies can be easily designed in 3D
- Facility to create custom part numbers
- Creation of custom articles to design third-party products
- Default parts (favourites) can be defined individually for time saving design
- Intelligent, user-optimized accuracy check features
- 15 languages available
- 16,000 items
- Direct creation and output of marking data to plotter or thermal transfer printer



1.

How to create a new project

- Create a new project group via "Project" - "Insert project group" in the menu.

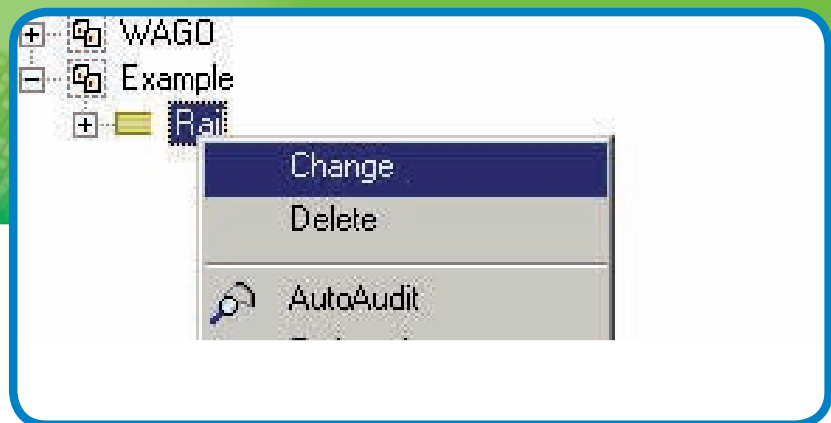
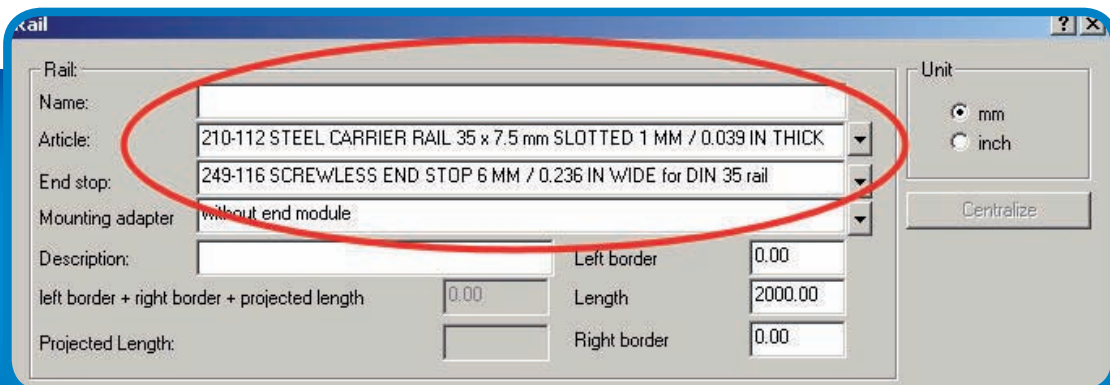


- Create a carrier rail by right clicking on the project group and selecting "Insert carrier rail".

object?



- Choose a carrier rail from the selection list and assign it a name.



- You can retrospectively change all data of the carrier rail - the drilling data, the length of the rail or even the carrier rail itself. To do so, right click on the rail and select the "Change" option.

2.

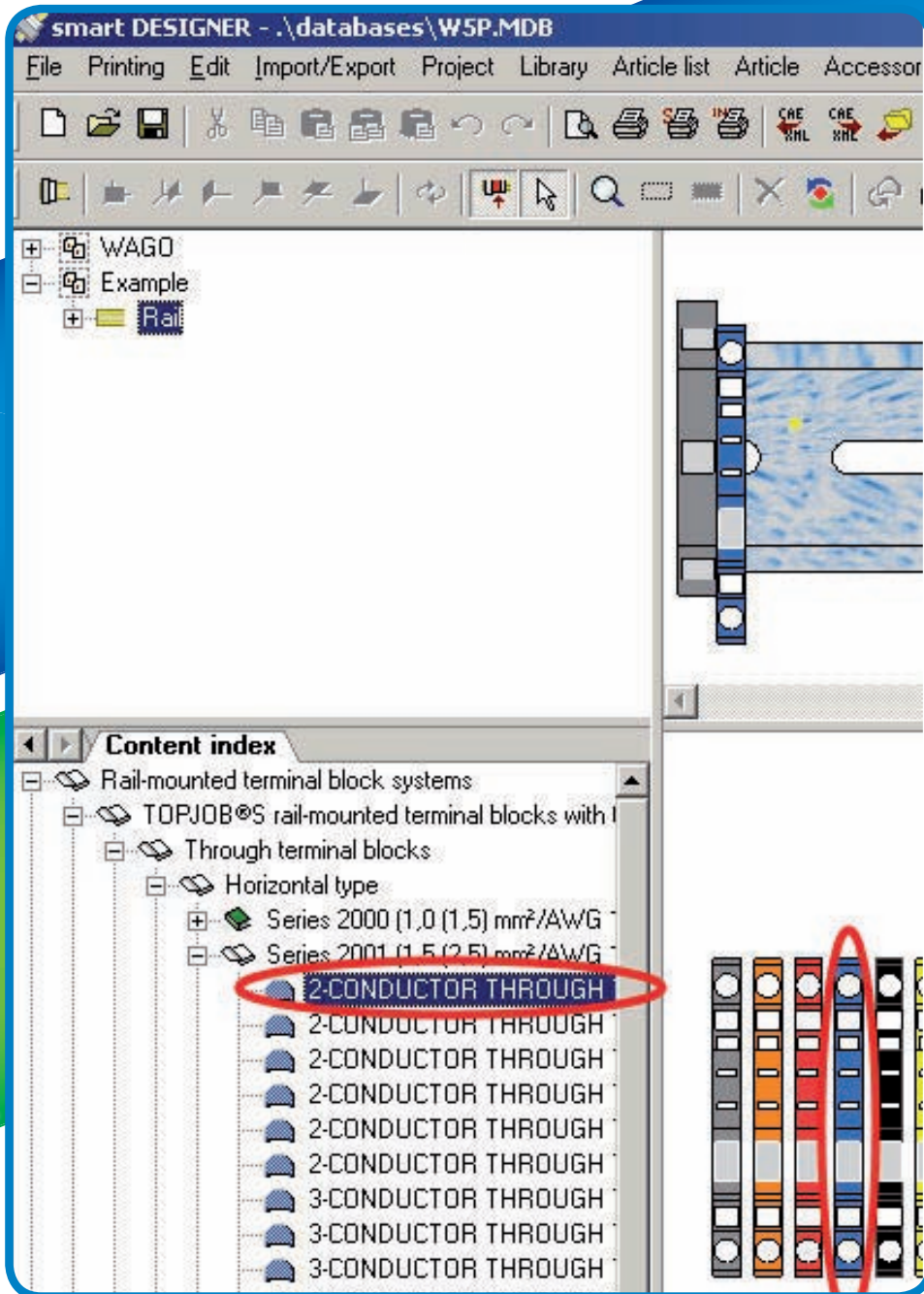
How to set components

- Enter the item number directly in the “Search” box and then click on “Add”.

The screenshot shows a software window titled "Item number/keyword search" with a "Questionnaire" tab. The search box contains the text "2001-1201". Below the search box, there are two search options: "Item number search" (selected with a radio button) and "Keyword" (unselected). Under "Item number search", there are two checked checkboxes: "Item number" and "Your Part Number". To the right of these options are three buttons: "Search", "Reset", and "Add". The "Add" button is circled in red. Below the buttons, there is a table with two rows, each containing the number "1" in a text box and a set of up/down arrows.

1	↑	↓
1	↑	↓

s on the carrier rail?

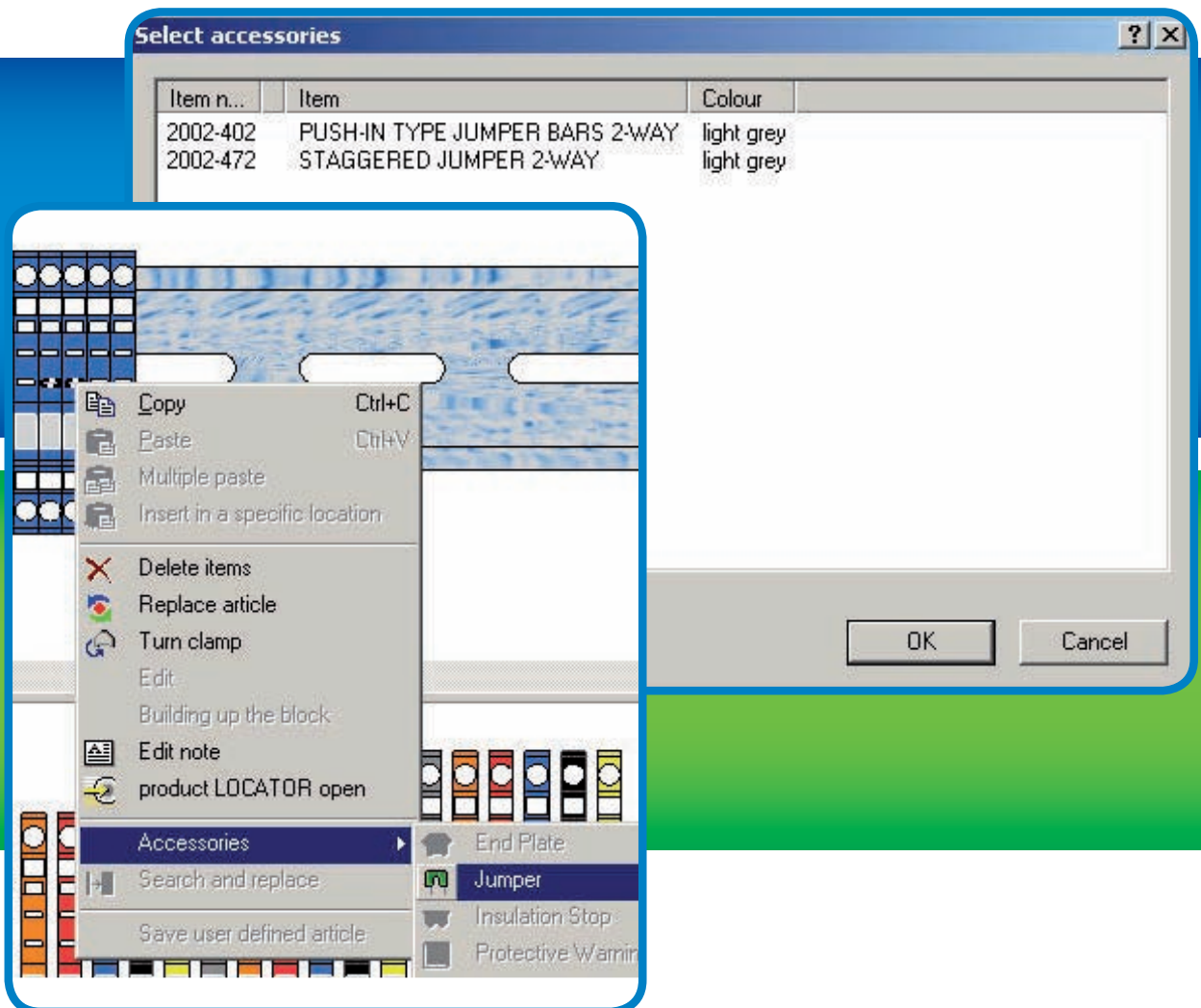


- Alternatively, you can take over the item from a custom library or from the directory via drag and drop.

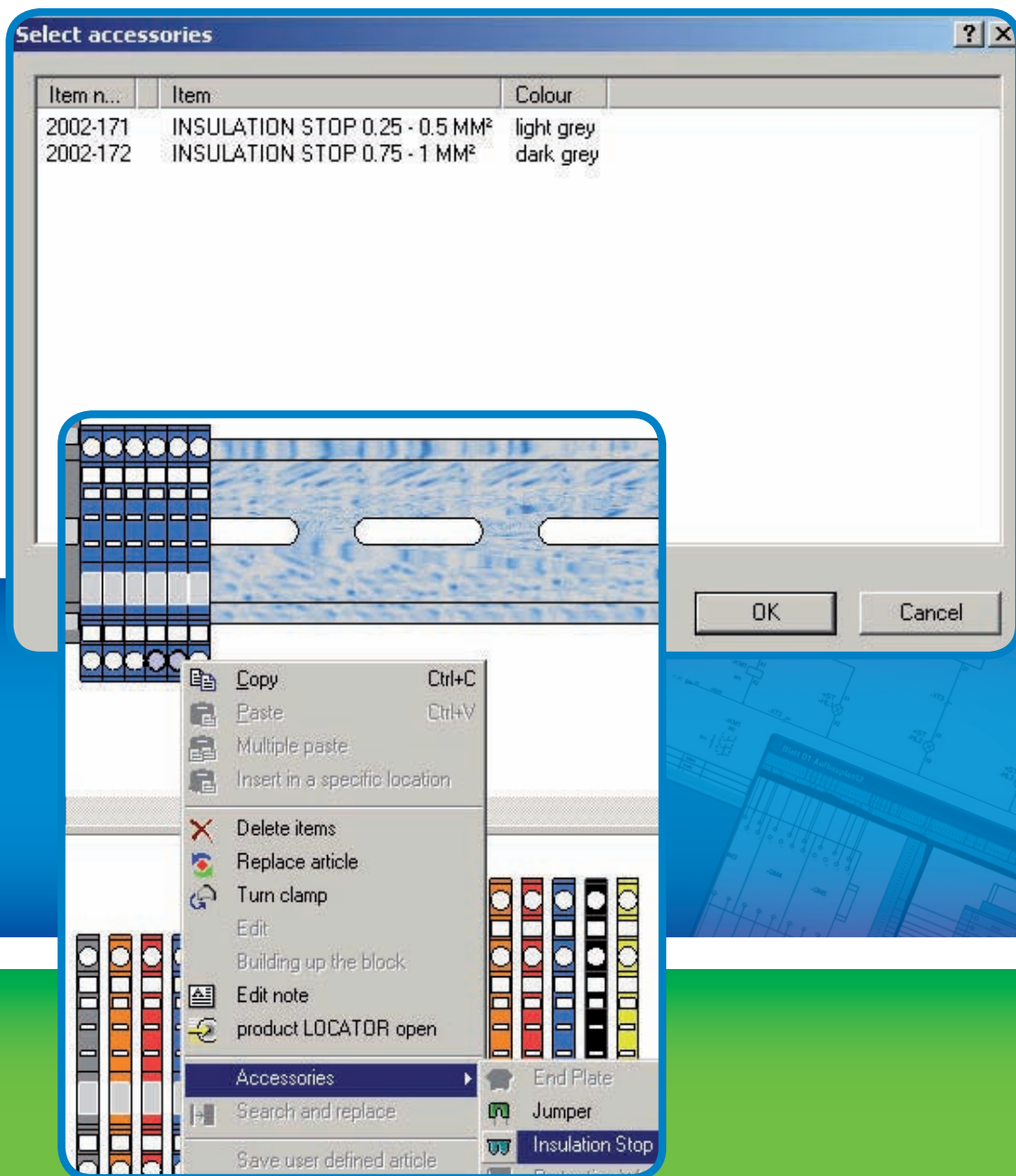
3.

How to set accessories on

- For example, select the appropriate jumper openings to add a push-in type jumper bar to a component (multiple selection using Shift or Ctrl.).
- Click on the “Jumper” button, and select the desired jumper from the appropriate jumper set.
- You can also select a jumper from the menu item “Accessories” – “Jumpers” or using the right mouse button.



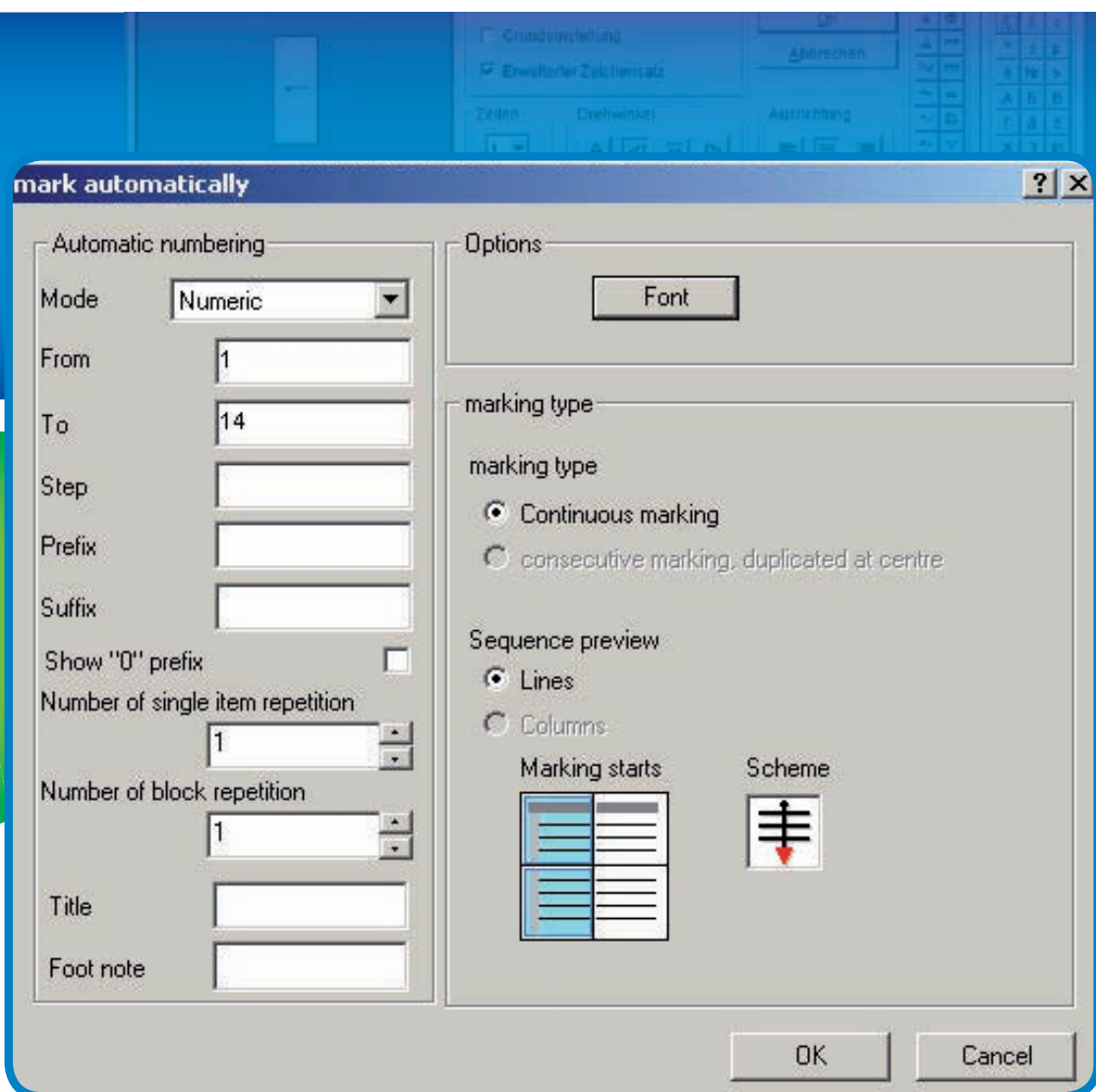
in the components?



Components?

Automatic marking (numbering)

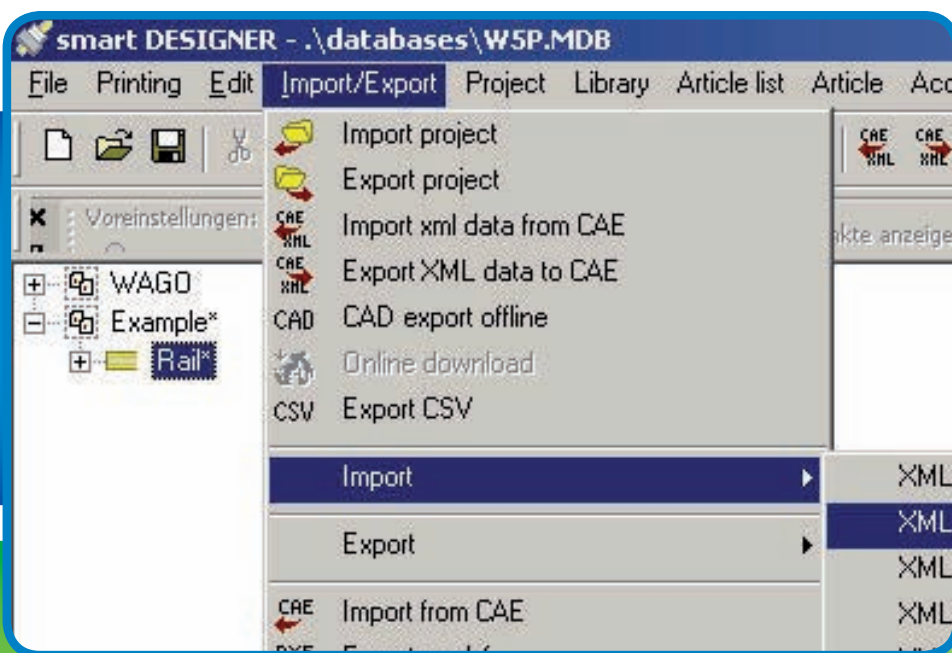
- For automatic numbering, click on the “Wizard” button within the marker table.
- You can also select a marker from the menu item “Marking” – “Marker table” or via the right mouse button.



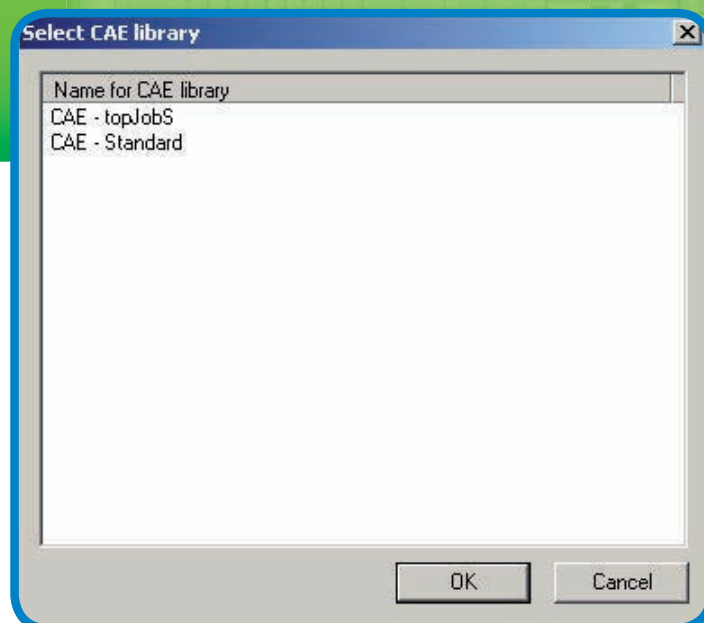
5.

CAE Import

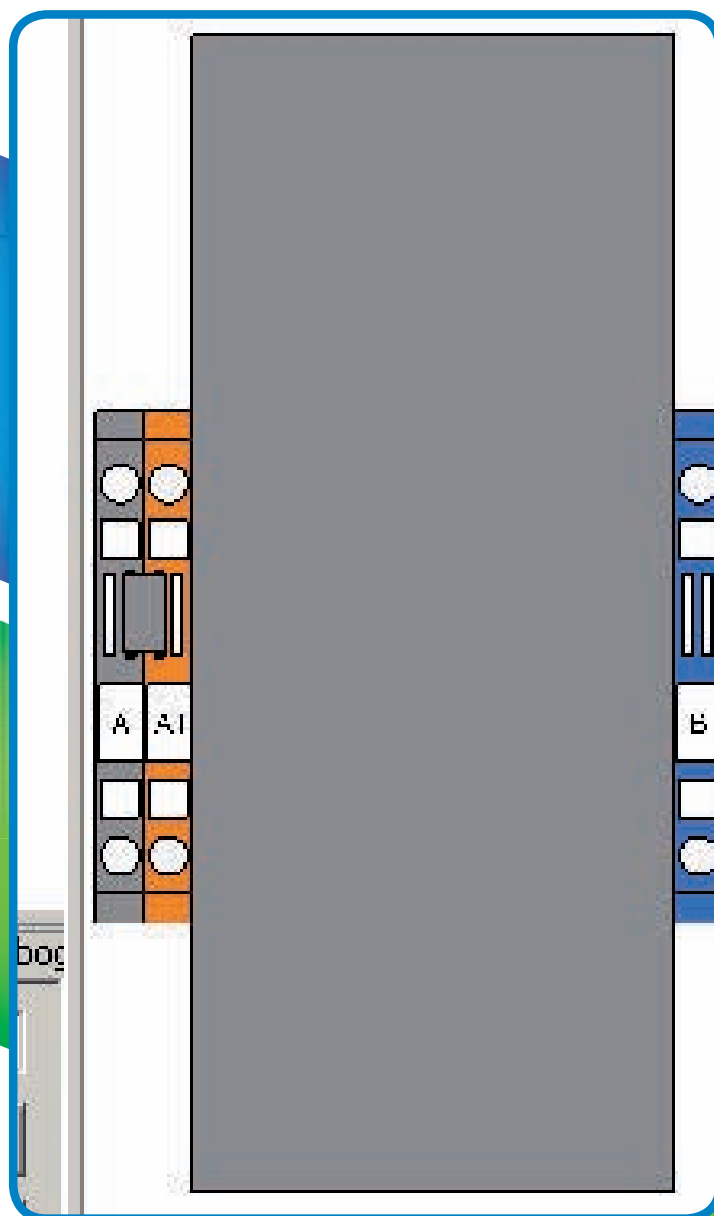
- Select the "Import/Export" menu item.
- Select an appropriate CAE system.



- A WAGO standard library must be selected if the CAE system contains no item numbers.



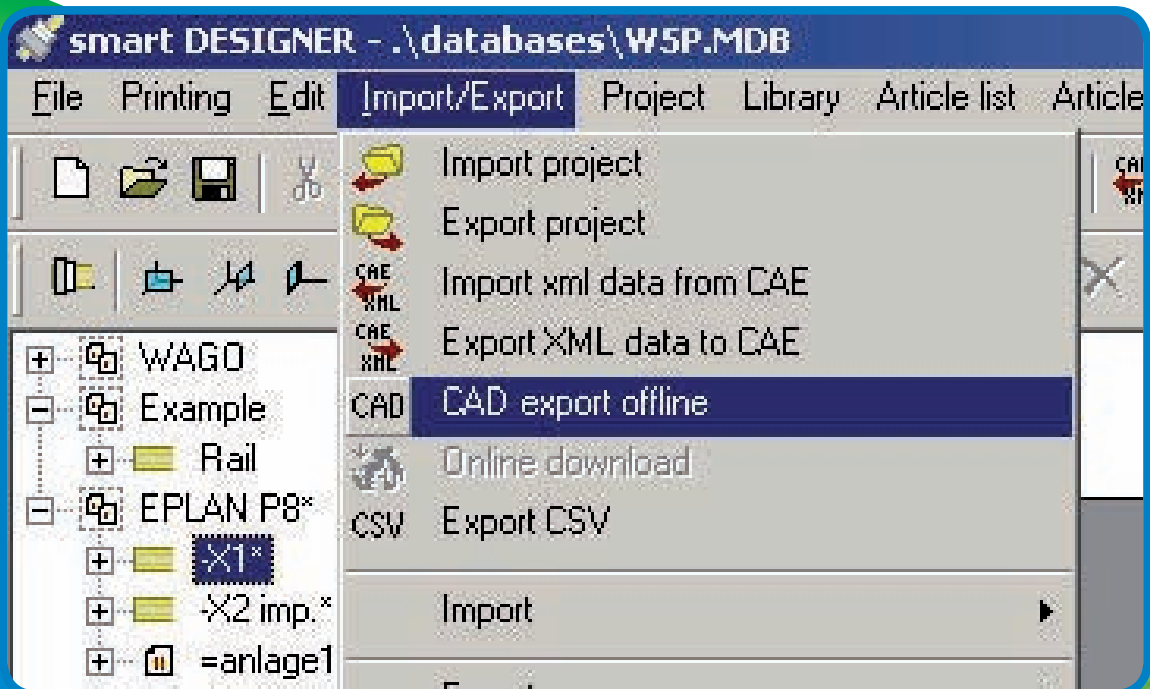
- Items with item number are imported from the CAE system including markers, items without item number are imported as user-defined items including technical data.
- WAGO items can be assigned to user-defined items via productLOCATOR .
- During subsequent export, the article numbers are transmitted to the CAE system.



6.

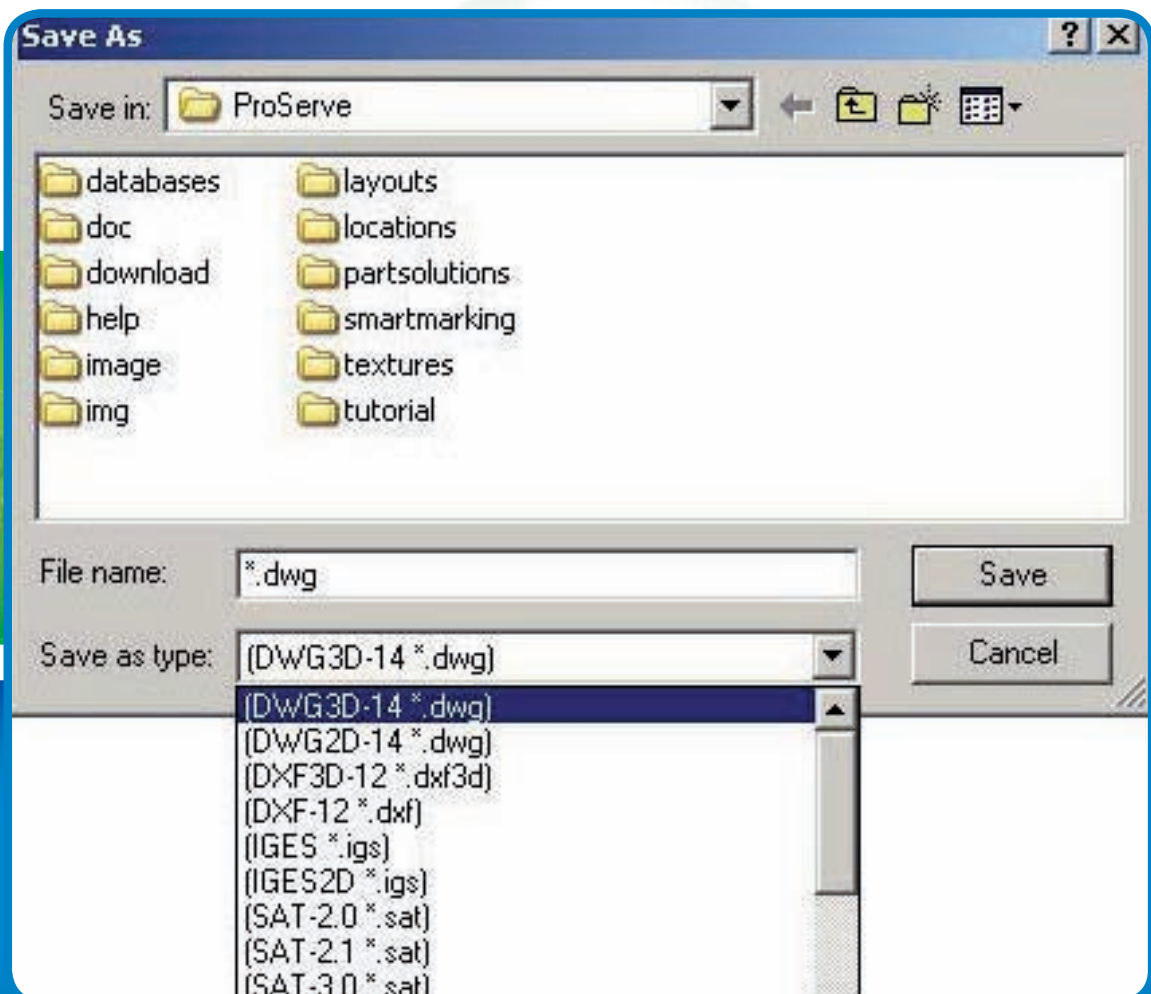
CAD Export

- Data is transmitted from smartDESIGNER to the CAD systems via "Import/Export - CAD export offline".



- The standard formats dxf, dwg, step and iges are available for data export.
- Any alarm message received during export indicates that not all products from the project may be available as CAD data. If this is the case, please contact: cad.proserve@wago.com.
- In addition, special export formats can be selected. To do so, please also contact

cad.proserve@wago.com



0888-0417/0001-0101 · Quick Start ProServe Software D+E · JA 11/08 · Printed in Germany · Subject to design changes

WAGO Kontakttechnik GmbH & Co. KG
Postfach 2880 · 32385 Minden
Hansastraße 27 · 32423 Minden
Phone:
Head Office +49/571/887 - 0
Sales Department +49/571/887 - 222
Order Services Department
+49/571/887 - 333
Technical Support +49/571/887 - 555
Fax: +49/5 71/8 87 - 169
E-mail: info@wago.com
Internet: www.wago.com

